

**KINCARDINE**



**TRAILS**

# Presentation Agenda

- Background on KTA, 2012 projects
- Phase II Proposal



# KTA Master Plan

**Phase I**      Town of Kincardine Proper

**Phase II**     Kincardine to Inverhuron  
Provincial Park

**Phase III**    Inverhuron Provincial Park to  
Municipal North Boundary

KTA formed in 2001 as a volunteer group developing 30km of trails to date





NEW permanent bridge installed  
that enables a truly  
four season system



# NEW stone dust trail was installed in Helliwell Park





NEW private landowner agreement  
for North Line Extension Trail adding  
another 6-7 kms to the municipal  
trails system



NEW bridges have been installed and trail development is nearing completion





# Upgrades to the Blue and Green Trails



Fraser Drive 35 steps installed

An aerial photograph showing a large body of water, likely a lake or bay, with a prominent sandy beach curving along the shoreline. The surrounding land is covered in dense green forest. The sky is overcast with soft, diffused light.

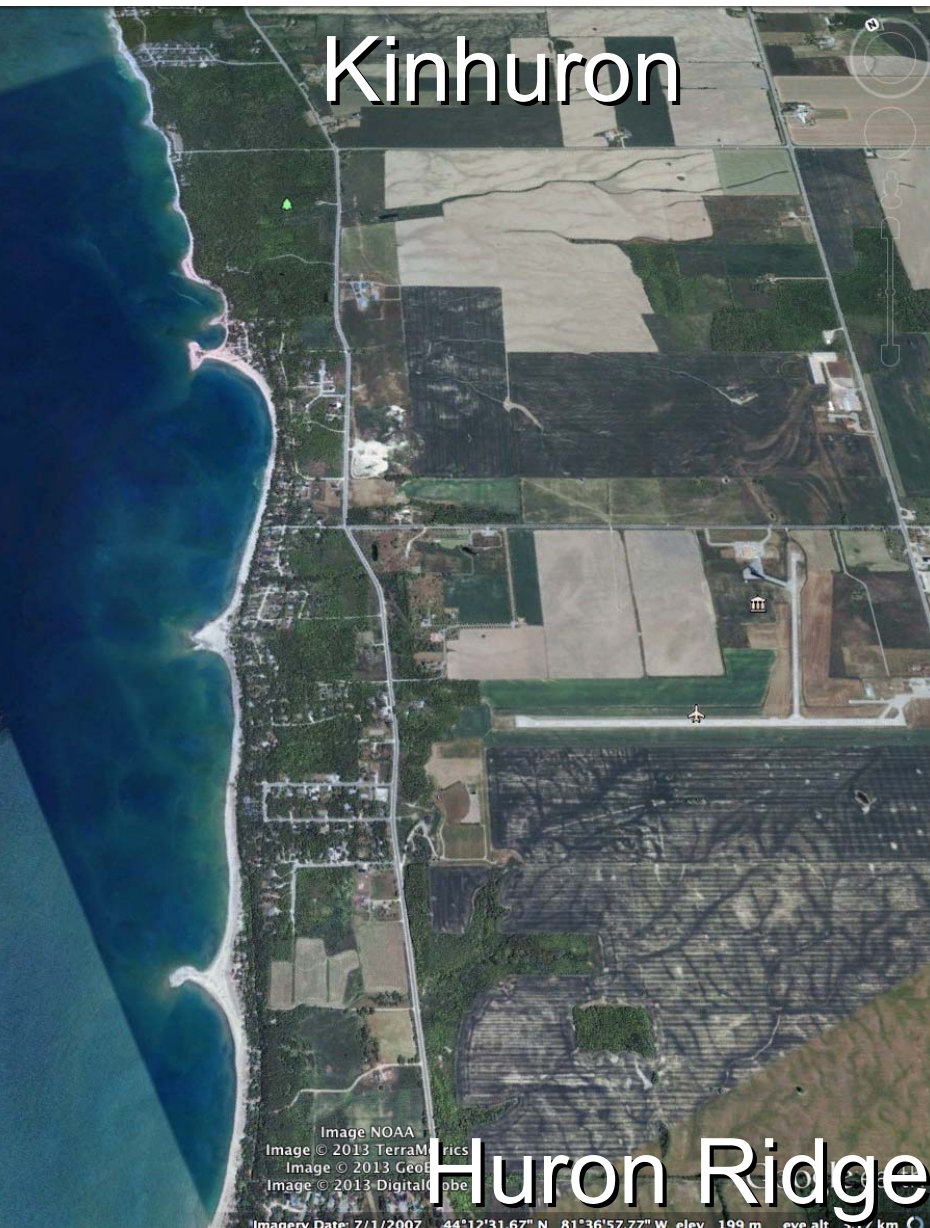
NEW Phase II  
Kincardine to Inverhuron trail  
preliminary work begun

Phase II project recognized as an  
“early win” by the Kincardine  
Sustainability Plan Committee




Mystic Cove shoreline trail





Original plan was to use combination of municipal and privately owned roads from Huron Ridge to Kinhuron.

KTA has deemed this to be unsustainable due to current and future private property issues

A satellite map showing a section of the Lake Huron coastline. The lake is on the left, with a dark blue to greenish water gradient. The shoreline is visible with some small islands and peninsulas. To the right of the lake is a patchwork of green and brown fields, likely agricultural land. Several locations are marked with red dots and labels: 'Inverhuron' at the top, 'Lake Huron Highland' in the middle, and 'Kin-huron' at the bottom. A road or trail runs along the coast. In the bottom right corner, there is a 'Google earth' logo. At the very bottom, there is a line of small text providing coordinates and elevation: 'Imagery Date: 7/1/2007 44°15'22.04" N 81°36'19.72" W elev. 177 m eye alt. 4.09 km'.

# Kin-Huron to Inverhuron section of trail

© 2013 Google  
Image NOAA  
Image © 2013 GeoEye  
Image © 2013 DigitalGlobe

Google earth

Imagery Date: 7/1/2007 44°15'22.04" N 81°36'19.72" W elev. 177 m eye alt. 4.09 km



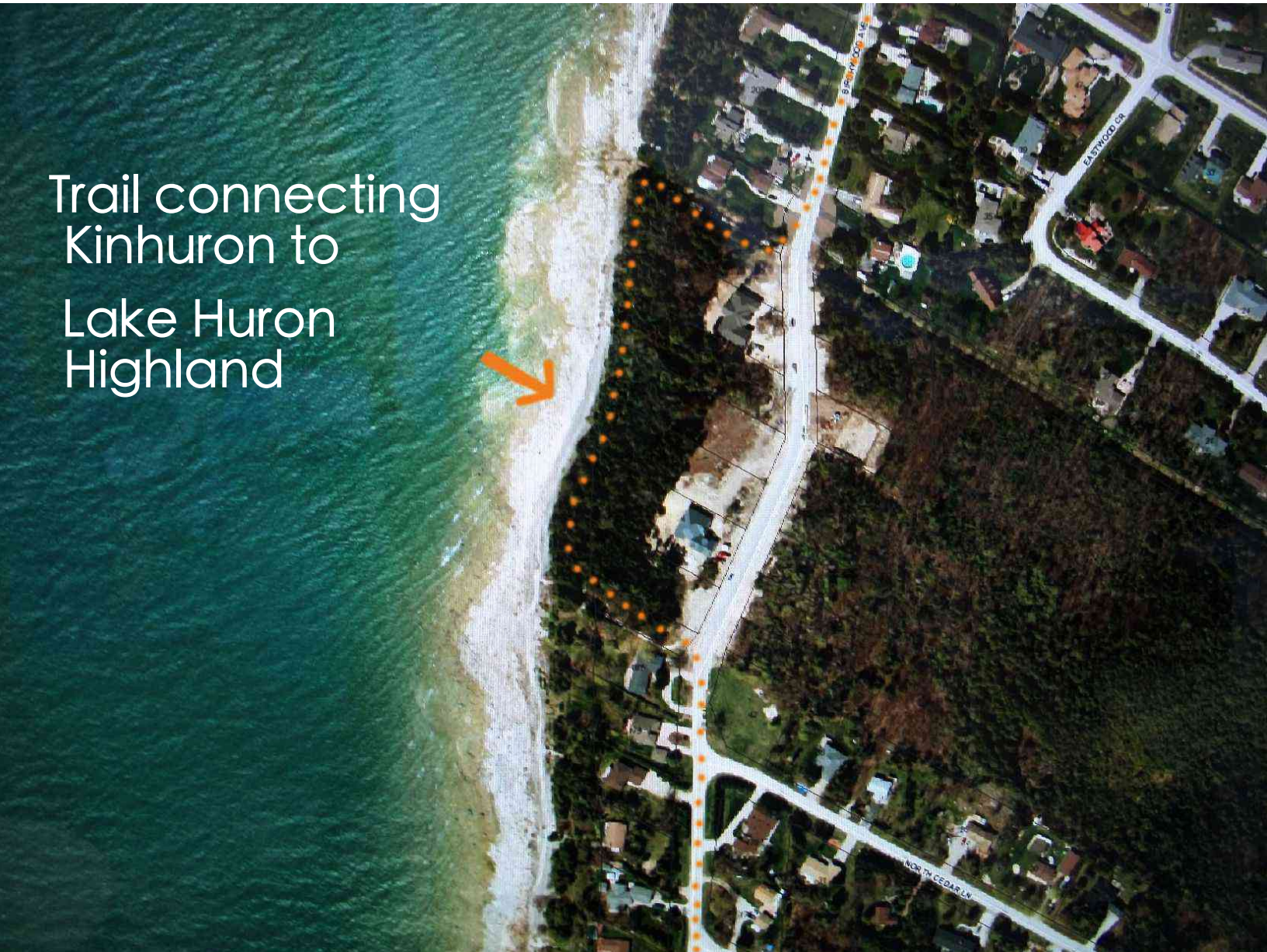
# Kin-Huron to Inverhuron Provincial Park section of trail

- Plan route on low traffic public roads
- Plan alternate/scenic side routes
- Assess and price signage requirements, trail development, etc





Trail connecting  
Kinhuron to  
Lake Huron  
Highland







Bridge connecting Lake Huron Highland to  
Lorne Beach





Lorne Beach  
Mystic Cove trail





North end of Mystic Cove trail



Little Sauble River, Inverhuron Park





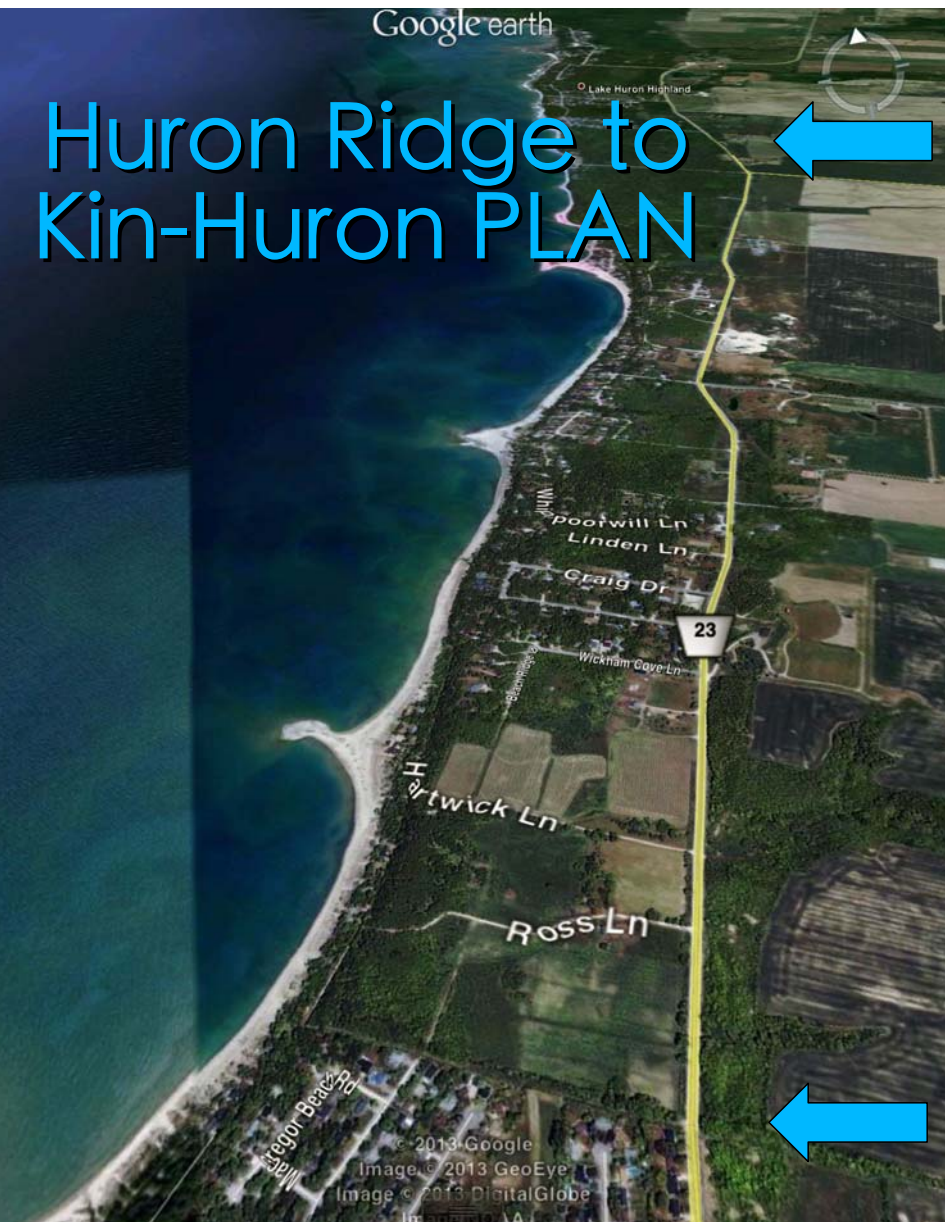
Little Sauble River, Inverhuron park





Little Sauble River, Inverhuron park

# Huron Ridge to Kin-Huron PLAN



Develop B-Line (CR 23) roadside trail

Proposing a 5km paved passive use trail to run alongside but separate from paved B-Line

Met to date with PW Manager, Bruce County Roads, Bruce County Planning & Kincardine Council

# Provincial mandate supports multimodal transportation

Grand Bend has a 9km roadside trail connecting Grand Bend to the Pinery Provincial Park

Saugeen Shores has developed a scenic trail connecting Port Elgin to Southampton along the shoreline and also connects to MacGregor Provincial Park.



# Port Elgin to Southampton trail













A paved trail winds through a forest. The ground is covered with fallen brown leaves and patches of snow. The trees are mostly bare, with some showing autumn-colored foliage. The text "Grand Bend to Pinery Provincial Park Trail" is overlaid in white.

# Grand Bend to Pinery Provincial Park Trail







# Safely Connecting Kincardine's Natural Assets



Stoney Island Conservation Area  
Inverhuron Provincial Park  
Kincardine's West Coast beaches

# Path forward

Investigate use of East vs. West sides, considering;

- Safety
- Access
- Need to use adjacent private property (easement/purchase)
- Barriers such as rivers, culverts, intersection crossings, etc
- Topography
- Cost



# Summary

KTA received Kincardine Councils unanimous support to proceed with project assessment and to fund an expert position (summer student) to assess and cost out the 5km Huron Ridge to Kin-Huron route

KTA has received Bruce County Road Committee support and assistance in moving forward with the assessment phase.